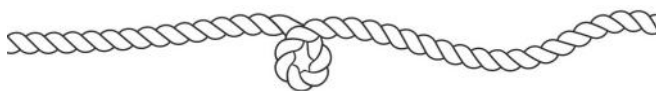


# HUNTER'S YARD



*Sailing Holidays & Tuition*

# Contents

Page 2	The Hunter Experience
Page 3	Hunter's History
Page 4	Welcome
Page 5	Hustler Class - 2-berths
Page 7	Wood Class - 3-berths
Page 9	Lullaby Class - 4 berths
Page 11	Half Deckers - Day Boats
Page 13	Sailing Tuition
Page 14	Learn to Sail Holidays
Page 15	The Little Extras
Page 16	Useful Information
Page 17	Youth Sailing
Page 18	Friends of Hunter's
Page 19	Winter Maintenance
Page 20	Private Work
Page 21	The Norfolk Broads
Page 22	Local Information
Page 23	FAQ's



# The Hunter Experience

## 2 Hour Skippered Sails

Sailing can be so many things...peaceful, fun, exhilarating and often all three in one sail! This is your opportunity to :

Take the helm for the first time  
Refresh your existing skills  
Or simply sit back and relax



Price includes, boat, skipper and use of buoyancy jackets.  
Children & well behaved dogs are welcome.

(All sails are weather dependent and subject to skipper availability)

Available Monday - Saturday 10:30 am or 1:30 pm

(Sorry, our sails are not available on Sundays or Bank Holidays)

Booking is essential, so please call:

**01692 678263**

or email [info@huntersyard.com](mailto:info@huntersyard.com) to secure your place.

*Gift Vouchers Available*



# Hunter's History

Percy Hunter, with his sons Cyril and Stanley, built the first shed here at Womack Water in 1932. Within a year they had designed, built and launched the first two cabin yachts of the Fleet. The Fleet grew each year and a second shed was built in 1935 to help house the thirteen yachts in the winter months.



The last two cabins yachts were completed after the war in the late 1940s.

The Hunter Family ran the Yard until 1968 when it was sold to the Norfolk County Council and was re-named Norfolk County Sailing Base. The traditions of the Yard were maintained, but the main aim became encouraging young people to sail and experience the team spirit involved.

In 1995 the council decided to sell the Fleet and the Yard as part of an economy measure. After much outcry a group of influential people formed a trust

with the aim of acquiring the Yard and the Fleet, and maintaining the high standards of boatbuilding it represented.

A huge fundraising effort was carried out and donations flooded in, amounting to over £100,000. This was boosted with a magnificent grant of £200,000 from the Heritage Lottery Fund.

In 1996 the Norfolk Heritage Fleet Trust took over the Yard and re-established its original name, Hunter's Yard.

The Trust continues to uphold the skills and traditions of the Yard and encourages youth sailing through the endowment fund, which provides resources to subsidise youth sailing on the Fleet.

The history of Hunter's is very much part of the Yard and its Fleet. The traditions of quality workmanship and excellent customer care remains as strong today as ever.



# Welcome To Hunter's Yard

Welcome to Hunter's Yard and the Norfolk Heritage Fleet Trust, the home of 'Percy's Lovely Ladies'. Our fleet of traditional 1930s sailing yachts are waiting to transport you to a bygone age on the wondrous Norfolk Broads.

Experienced skippers can enjoy short breaks or full weeks onboard our 2, 3, and 4 berth cabin yachts. Or you may prefer one of our half deckers for a day or more.

We have engineless craft for the purist but if you'd like a bit of help, try one with an electric motor.



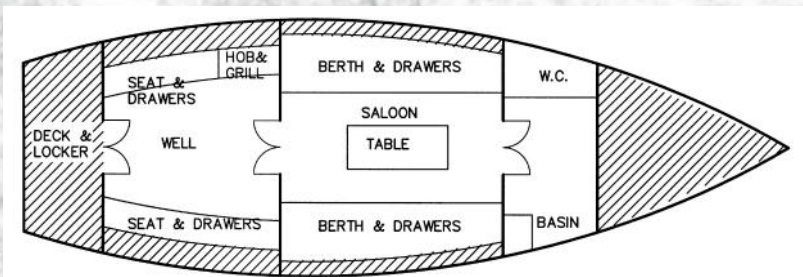
If you're a newcomer to sailing, we have a number of tuition options available. Maybe a sail with an experienced skipper is more to your taste? Where you can 'have a go' or simply sit back and enjoy the surroundings.

Perhaps just sitting by the water with a picnic and a cuppa suits you best? Whatever brings you to Hunter's, we're sure we can help you enjoy your visit to the Yard and the Norfolk Broads.



# Hustler Class

*Sleeps 2-3*



# About the Hustler

These single cabin gaff sloops were designed to give a performance that should satisfy the experienced yachtsman.

These beautiful boats are also the most popular with **very experienced solo sailors**.

Five yachts are available, all built between 1935 and 1938.

**Hustlers 1, 3 & 4 are fitted with electric engines with folding props & fast charger facility.**

**Sailing experience is required for this craft.**

Berths	2 Single bunks with an optional extra person
Bedding	10.5 tog duvets and pillows with covers, fitted sheets and mattress covers
Extra Gear	Quilt, pillow and mattresses for the floor between the bunks ( <b>additional charge*</b> )
Buoyancy Jackets	2 Self-activating jackets are allocated to the boat (Crewsaver style also available)
Rig	Gaff sloop with self-tacking jib
Mast Lowering	Counter weight
Length	LOA 24ft (7.3m)
Beam	7ft 6in (2.3m)
Draught	2ft 6in (0.76m)
Keel	Fixed Ballast
Bridge Clearance	Minimum 5ft 11in (1.8m)
Headroom	5ft 9in (1.75m) with cabin top raised (aft end)
Engine	No engine on Hustlers 2 & 5 - just a quant**
Cooking	Propane gas cooker with 2 rings and a grill
Utensils	Crockery, cutlery and cooking utensils
Water	2 x 10 litre containers (kept in aft locker)

**\*\* Torqeedo electric 'pod' engine on Hustlers 1, 3 & 4 only.**

An extra charge is payable if batteries need replacing during hire period.

There is a small price difference between the engine and non-engine boats.

**Folding propellers so engine will not affect sailing.**

**\*For extras and essential booking information please see pages 15 & 16.**

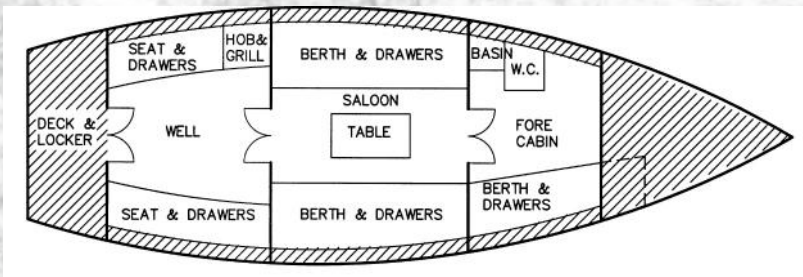
All yachts are supplied with full awnings covering cabin and well areas.

Bunk sizes are normally approx. 6'2" - exceptions are Hustler 2 with 6'5" and Hustler 5 with 6'3"



# Wood Class

*Sleeps 3-4*



# About the Wood

Sailing enthusiasts who require a bit more space without losing too much performance may find these two cabin gaff sloops ideal.

Five yachts are available, Wood Sorrel - 1933, Woods Violet & Rose 1934, Wood Anemone - 1947 & Wood Avens - 1949.

*Woods Avens & Violet are fitted with electric engines with folding props & fast charger facility.*

**Sailing experience is required for this craft.**

Berths	3 Single bunks with an optional extra person
Bedding	10.5 tog duvets and pillows with covers, fitted sheets and mattress covers
Extra Gear	Quilt, pillow and mattresses for the floor between the bunks (additional charge*)
Buoyancy Jackets	3 Self activating jackets are allocated to the boat (Crewsaver style also available)
Rig	Gaff sloop with self-tacking jib
Mast Lowering	Counter weight
Length	LOA 24ft (7.3m)
Beam	7ft 6in (2.3m)
Draught	2ft 6in (0.76m)
Keel	Fixed Ballast
Bridge Clearance	Minimum 5ft 11in (1.8m).
Headroom	5ft 9in (1.75m) with cabin top raised (aft end)
Engine	No engine - just a quant**
Cooking	Propane gas cooker with 2 rings and a grill
Utensils	Crockery, cutlery and cooking utensils
Water	2 x 10 litre containers (kept in aft locker)

**\*\* Torqeedo electric 'pod' engines on Woods Avens & Violet only.**

An extra charge is payable if batteries need replacing during hire period.  
There is a small price difference between the engine and non-engine boats.

**Folding propellers so engine will not affect sailing.**

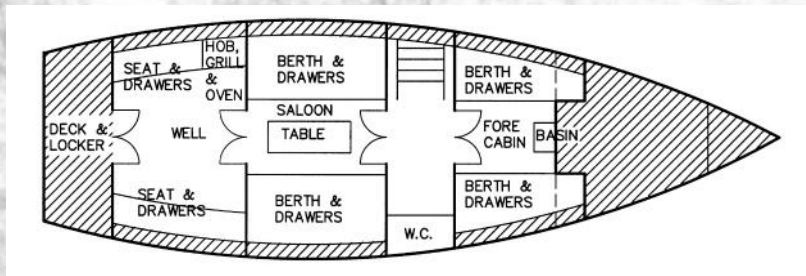
**\*For extras and essential booking information please see pages 15 & 16.**

All yachts are supplied with full awnings covering cabin and well areas.  
Bunk sizes are normally approx. 6'2" - with front bunk approximately 6'



# Lullaby Class

Sleeps 4-5



# About the Lullaby

These magnificent gaff sloops are comfortably equipped for a party of four persons in two cabins separated by a companionway and toilet compartment.

Four yachts are available, Lustre & Lullaby - 1932, Luna - 1933, & Lucent - 2007.

*Lustre, Luna & Lucent are fitted with electric engines with folding props & fast charger facility.*

**Sailing experience is required for this craft.**

Berths	4 Single bunks with an optional extra person
Bedding	10.5 tog duvets and pillows with covers, fitted sheets and mattress covers
Extra Gear	Quilt, pillow and mattresses for the floor between the bunks (additional charge*)
Buoyancy Jackets	4 Self activating jackets are allocated to the boat (Crewsaver style also available)
Rig	Gaff sloop with self-tacking jib
Mast Lowering	Counter weight
Length	LOA 28ft (8.6m)
Beam	8ft 6in (2.6m)
Draught	2ft 6in (0.76m)
Keel	Fixed Ballast
Bridge Clearance	Minimum 6ft 1in (1.85m)
Headroom	5ft 9in (1.75m) with cabin top raised (aft end)
Engine	Torqeedo electric pod & a quant <b>**No engine on Lullaby</b>
Cooking	Propane gas cooker with 2 rings and a grill
Utensils	Crockery, cutlery and cooking utensils
Water	3 x 10 litre containers (kept in aft locker)

**\*\* Electric engines on Lustre, Luna & Lucent.**

An extra charge is payable if batteries need replacing during hire period.  
There is a small price difference between the engine and non-engine boats.

**Folding propellers so engine will not affect sailing.**

**\*For extras and essential booking information please see pages 15 & 16.**

All yachts are supplied with full awnings covering cabin and well areas.  
Bunk sizes are normally approx. 6'2" - exception is Lucent with 6'6" bunks.



# Half Decker - Day Boats

## Traditional Wooden Gunter Rigs

### Buff Tip

A Yare and Bure One Design, also known as a White Boat.

- Gunter Rigged
- Main Sail & Jib
- LOA 20' (6.1m)
- Fixed Keel
- Oars and Camping Awning
- Buoyancy Jackets Supplied
- Seats up to 5



### Rebel Reveller (R9), Valiant Rebel (R10) & Lucky Rebel (R13)

A rare opportunity to sail a high Performance craft.

- Gunter Rigged
- Main Sail & Jib
- LOA 22'9" (6.9m)
- Fixed Keel
- Paddles and Camping Awning
- Buoyancy Jackets Supplied
- Seats up to 5



### Sundew

As a Waveney One Design, she's a beautiful example of this ever popular sailing craft.

- Gunter Rigged
- Main Sail & Jib
- LOA 20' (6.1m)
- Fixed Keel
- Paddles and Camping Awning
- Buoyancy Jackets Supplied
- Seats up to 5



# Half Decker - Day Boats

## Traditional Wooden Balanced Lugs

All of our single sail balanced lugs are ideal for beginners, solo sailors and those wishing to refresh their sailing skills.



### Brown Bess

She is particularly easy to sail, very stable and is one of the favourites.

- Balanced Lug Rigged
- Single Sail
- LOA 20' (6.1m)
- Fixed Keel
- Oars and Camping Awning
- Buoyancy Jackets Supplied
- Seats up to 4

### Woodcut & Woodcut 2

Built by the Hunter Family

- Balanced Lug Rigged
- Single Sail
- LOA 18' (5.5m)
- Fixed Keel
- Oars and Camping Awning
- Buoyancy Jackets Supplied
- Seats up to 4



Our half-deckers are also ideal for camping or mooring outside your holiday cottage.



# Sailing Tuition

RYA - Levels 1, 2, 3 & Seamanship

*Hunter's Own - Introduction to Cabin Yachts*

As a Royal Yachting Association (RYA) Training Centre we are able to offer a range of training from the National Sailing Scheme using our keelboats. Our comprehensive, non residential courses are designed for all levels from beginners to advanced.

## Combined Beginners Course

Covers RYA Levels 1 & 2

5 days

This is an intensive course, designed to produce competent sailors who will be able to sail independently in moderate conditions.

## Better Sailing Course

Covers RYA Level 3

2 days

This course follows on from levels 1 & 2, aiming to build confidence, developing good techniques and promoting more successful independent sailing.



## RYA Seamanship Course

Improving your skills

3 days

This course develops all the skills you learnt in Levels 1 & 2, takes you towards improving your sailing and boat handling skills which builds your confidence and abilities to make seamanship decisions in moderate conditions.

## Introduction to Cabin Yachts

Hunter's Own Course

2 days

This course is designed to help you convert from a half decker to a larger heavier yacht. You will cover handling a gaff-rigged boat with self acting jib, setting sail, sail controls and more! Sleeping onboard during your course is welcome.

**NB - This is not an RYA Course.**

## Individual Instruction

Instructor - £100 per day

Half a Day - £60 am or £50 pm

Instructor RYA Course - £110 per day

Please note - you will need to add the cost of boat hire to the instructor costs.

All courses include full instruction, books, certificates and use of buoyancy jackets.

**Courses are subject to weather conditions and sufficient numbers.**

# Learn to Sail Holidays

*Want to learn how to sail?*

Ever wanted to sail a 'Hunter' boat?

Why not learn to sail and have a holiday at the same time?

You can even achieve RYA certificates!



## How it works:

- Hire a cabin yacht for 7 days
- 5 tuition days - combining RYA Levels 1 & 2
- Sail on your own for the last 2 days - our instructors are happy to assist you on your last 2 days if required or due to adverse weather conditions
- RYA Certificates for each person (subject to passing)
- Price includes all books & certificates
- Ideal for families, friends, groups, clubs and work colleagues





# Extras

## Dinghies - Engines - Pets - Assistance - Parking

*The little extras that can make all the difference*

### Dinghies - Tenders

Why not add a rowing or sailing dinghy? Good for the little ones and the 'big uns' too! Or for just rowing to the shore from the middle of a Broad.



### Pet Charge

Pets are welcome at an additional charge. Pet bedding is not supplied. Small selection of doggy buoyancy aids are available.



### Sailing Assistance

We can arrange help from an experienced skipper for a couple of hours while you get your 'sailing legs' back and help you get the best from your boat so you can enjoy the Broads.

Please let us know when you book.

### Electric Engines

Torqueedo propeller, side mounted throttle. It is optional and there is a small charge for use of the engine and an extra charge if batteries need replacing during hire period.

Hustlers 1, 3 & 4, Wood Avens & Rose, Lustre, Luna & Lucent.

Each boat is supplied with its own fast charger facility. Electric cards can be purchased at the Yard.

Folding props, so engine will not affect sailing.



### Car Parking

Outside parking is free for one car per boat, unless otherwise arranged with the Yard. More secure parking inside the shed is available at an additional charge. (space allowing)

# Useful Information

### Opening Times

Monday to Saturday 8am - 4:30pm

(Closed Sundays and Bank Holidays)

### Takeover Times

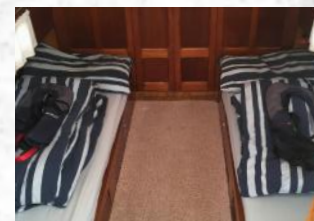
#### Cabin Yachts

Full week - between 1:30pm - 4pm

Short Break - from 11am

#### Half Deckers

From 9am



### Handover Times

Handover on all bookings is by 9am on the day of departure please.



### Inventory

Each cabin yacht has crockery, cutlery and cooking utensils to accommodate the number of berths per boat, examples are:

Mugs	Jug	Tea Pot	Chopping Board
Glasses	Slotted Spoon	Kettle	Scissors
Dinner Plates	Fish Slice	Frying Pan	Saucepans
Side Plates	Tongs	Mixing Bowl	Cutlery
Cereal Bowls	Potato Peeler	Cheese Grater	Kitchen Knife
Egg Cups	Tin opener	Bottle Opener	Paring Knife

### Don't forget to bring

Washing up liquid, cheap and cheerful toilet paper, a first aid kit, sun tan lotion, power bank portable charger, towels and your personal belongings.

### Information Packs

Information packs are onboard containing a lot of helpful information e.g. maps, tide tables, shower info, places to eat and drink etc.

NB. Our normal hire week runs from Saturday to Saturday.



# Youth Sailing

We believe the education young people can get from working with 'Mother Nature' and each other can be a 'life changing' experience.

Are you or do you know of a **youth group** or **school** with young people in need of a change of outdoor activity? Why not bring them sailing?

A special aim of our organisation is to encourage young people to sail on the Hunter Fleet. As part of this aim the Trust offers a **30% discount** on cabin yacht and half decker hire for all organised youth groups and schools.

## Your young people can learn:

- Teamwork
- Tolerance
- Appreciation of wind and water
- Close contact with the natural world

## This in turn can help them to:

- Greater self-awareness
- Accept responsibility
- A positive sense of well-being
- A growth in self-confidence



## Need experienced skippers?

Can't find enough experienced skippers for your group? We endeavour to put the organiser in touch with experienced sailors who are willing to help.

**2-hour skippered sails** are also available with a **20% discount**.

For more information call **01692 678263**

Or email **info@huntersyard.com**

**Please note:** For group bookings all stated hire rates are subject to VAT and are calculated as hire rates, less discount + VAT.

# Friends of the Hunter Fleet

The Friends of the Hunter Fleet was founded in 1996 to maintain a continuing link with the many people who made donations in order to set up the Trust, to act as a 'User Group' for the hirers of the yachts and to help the work of the Trust.

Today 'The Friends' enjoy a membership of around 700 families who are very much a part of the Hunter's Yard environment. They help to provide practical and financial support to strengthen the aims of the Trust in terms of preserving the Fleet, maintaining the traditional skills of wooden boat building and encouraging youth sailing.

## By joining 'The Friends' you would be:

- Assisting with the preservation and maintenance of the Yard and Fleet.
- Supporting the continued use of the Fleet by schools and youth groups.
- Helping ensure the craft will continue to be here for everyone to sail.
- Helping to preserve a small piece of local history.



## Your membership fee offers you:

- Two social events at the Yard each year with free sailing for members.
- A newsletter three times a year.
- A 10% discount on boat hire during Friends' weeks.



We're always looking for new 'Friends' so if you're not a member yet, why not join today or recommend a friend too? Application forms and gift vouchers are available from Hunter's Yard, our website or by emailing the Friends directly at [friendsmembership@huntersyard.com](mailto:friendsmembership@huntersyard.com)

The nominal annual membership fee helps to cover the cost of Newsletters as well as contributing towards donations to the Trust. These donations are used on items for the Fleet, not general running costs, which make a very real difference.



# Winter Maintenance

The winter maintenance programme is a very important part of keeping Percy's 'Lovely Ladies' not only looking their best but performing their best. When you're dealing with 21 boats, most of them over 80 years old, all made of wood, it means these 'old gals' take quite a bit of TLC to get them ready for their next season. Not only that, the guys here insist on them all starting as close to perfect as they can be (for old ladies that is!).

Our attitude is that prevention is better than cure, so we maintain a rolling programme of 'properly' repairing or replacing items before they become major problems. To manage all this we have to run a shorter season than other boatyards; with our yachts and half deckers coming into the sheds by the third week in October at the latest. This practice has been observed since Hunters first began letting yachts and goes some way towards explaining the very good condition the boats are in.



Once in the sheds the work really begins. This involves detailed assessment of repairs needed to each boat, scraping back and rubbing down, carrying out a wide range of repairs, anti-fouling, varnishing - the list goes on. The sheds are full of the sounds of machinery with tools working away and the smell of wood and varnish; finishing off with the wonderful sight of gleaming mahogany boats.



How do we manage all this every year? The answer lies in the hands of our highly skilled, traditional boat building craftsmen here at the Yard. Our dedicated team work solidly throughout winter to produce the best results for the start of the next season.

# Private Work

Hunter's Yard now offers its boatbuilding team to carry out minor maintenance, anti-fouling, varnish work, quant making, minor accident damage repairs and the like, to small wooden craft during the summer season. We can carry out repairs in the water, on a trailer or in the shed (dimensions of the boat permitting).

We're available for this type of work from the end of April until September.

Please note any work undertaken must be able to be completed by the end of September.

For more information about our services or for an estimate, please call us on:

**01692 678263**





# The Norfolk Broads

The Norfolk Broads are a network of mostly navigable waterways which were created by tidal flooding of medieval peat workings. The outcome is a wonderful environment filled with natural beauty which is now enjoyed year after year by returning and new visitors alike.



Amongst the many attractions of the Norfolk Broads is the wildlife. You may spot a heron patiently waiting to spy a fish to catch or glimpse the bright blue flash of a kingfisher. You may hear the boom of the bittern, even see one if you're really in luck! And the Norfolk Broads is also the only place in the UK where you could spot the magnificent swallowtail butterfly....just like the boats of Hunter's Fleet!

You may choose to visit Horsey Windpump and admire the views over the mere. Then take a walk to Horsey Beach and see the seal colony there. Gently quant under Potter Heigham Bridge, one of two medieval bridges remaining on the Broads, built in 1385. If you visit How Hill, the secret gardens are there to be explored, you can pop along to Toad Hole Cottage and the tiny Eel Catcher's Cottage there too.

As well as admiring the impressive How Hill House itself there are so many things to be seen and enjoyed here on the Norfolk Broads. Thurne Mill amongst others, St Benet's Abbey - the remains of a Benedictine Monastery...and of course, many traditional pubs to eat and drink at.



Your Norfolk Broads adventure awaits!

# Local Information

## Bed & Breakfasts

Dairy Barns  
**Hickling** - 01692 598243

The Moorhen  
**Horning** - 01692 631444

Ye Olde Saddlery  
**Neatishead** - 01692 630826

## Camp Sites

Norfolk Broads Caravan and  
Motorhome Club Site  
**Ludham** - 01692 630357

White House Farm Campsite  
**Potter Heigham** - 01692 670702

The Dog Inn  
**Ludham** - 01692 630321

## Public Houses

Greyhound Inn  
**Hickling** - 01692 598306

The Dog Inn  
**Ludham** - 01692 630321

The Lion  
**Thurne** - 01692 671806

The Kings Arms  
**Ludham** - 01692 678386

The New Inn  
**Horning** - 01692 631101

The Maltsters  
**Ranworth** - 01603 270900

Acle Bridge Inn  
**Acle** - 01493 750288

The Falgate  
**Potter Heigham** - 01692 670003

## Convenience Stores

Ludham Convenience Store & P.O.  
**Ludham** - 01692 678815

The Big Shop on Womack Staithe  
**Ludham** - 01692 678193

Ludham Bridge Stores  
**Ludham** - 01692 630322

Latham's  
**Potter Heigham** - 01692 670080

Dunes River Cafe  
**Acle** - check facebook  
@Dunesrivercafe

Ludham Butchers  
**Ludham** - 01692 678226

Eleanor Rose Florist  
**Ludham** - 01692 678150



## Taxis

Horning Cars  
**Horning** - 01692 630856

Wroxham Taxis  
**Hoveton** - 01603 782925

Stalham Cabs  
**Stalham** - 01692 581666

Stripes Express - Taxis  
**Potter Heigham** - 01692 434007

Hare Private Hire  
**Acle** - 07368 385779



# Planning Your Cruise

- Don't be over-ambitious
- Conditions change so be prepared to adjust your plans
- The Yard staff can also advise during your hand-over brief
- Boats must be back on time to be cleaned for the next hire

## Short-Breaks - 2 or 3 days

- Why waste much of your sailing time going through a bridge?
- Heading through **Potter Heigham** bridge is too ambitious if the tides and wind are unfavourable
- Ranworth (**Malthouse** Broad) staithe has a shop, pub, and a good nature walk to the Norfolk Wildlife Trust Centre
- **St Benet's Abbey**: very informative displays
- **Cockshoot Dyke**: a good nature ramble
- Moorings on **Fleet Dyke** are about 1 ¼ miles from the village
- **South Walsham**: good sailing on both Broads
- Acle Bridge: moorings have a popular pub and a tapas bar
- Thurn Dyke has a pub - close to the Yard for your final night



## Southern Broads

We do not advise going south of Acle Bridge and to the Southern Broads unless you are very experienced on Hunter yachts or you have one of the yachts with the 'electric quant'. The tides on the Bure flow fast and negotiating Yarmouth and its bridges requires knowledge and skill. Information is available at the Yard for those who want to head south.

# Planning Your Cruise

## A Longer Cruise

### River Thurne

- Aim to pass **Potter Heigham** bridges close to slack water
- **Hickling Broad**: open water and is a national nature reserve
- **Meadow Dyke** to Horsey is long, narrow and twisty
- **Horsey Mere**: good sailing, also a nature reserve: a 1 ½ mile walk to the beach and sea
- Beyond Martham Ferry - channel through **Martham Broad**
- **West Somerton**: quiet mooring, a pub about ½ mile away

### River Bure

- There is a pub at **Upton** but Upton Dyke is long and narrow
- Broads at **South Walsham** and **Ranworth** (see notes above)
- Moorings and interest at **St Benet's Abbey** and **Cockshoot**
- **Horning**: popular but few public moorings: gets crowded
- **Blackhorse** (Hoveton Little) Broad has no bankside mooring
- Salhouse Broad: a nice spot with good moorings
- River to Wroxham is heavily wooded
- Wroxham Broad has good open sailing
- Wroxham: full of motor boats, limited facilities for yachts
- Coltishall: good moorings and pubs. The river above the Wroxham bridge is wooded and narrow



### River Ant

- The Ant is narrow: early morning and late evening are the best times to avoid too many motor cruisers
- Take care when approaching the **Ludham Bridge**. There is a shop
- **How Hill**: good moorings and interesting activities
- **Barton Broad**: good open sailing all over the broad
- **Gay's Staithe**: (off the SW of the broad) free moorings and toilets not far away. ¾ mile walk to Neatishead village
- **Neatishead**: has a small staithe, pub and shop
- **Barton Turf**: village has free moorings but no shop or pub
- **Sutton Broad**: quiet and good mudweight moorings
- **Stalham**: small town with shops, pubs and Museum
- The river to **Wayford Bridge** is narrow, twisty and wooded



# Frequently Asked Questions



## What sailing qualifications do I need?

We don't ask for formal qualifications but expect you to have sailed recently and as the skipper in charge. Good dinghy helmsmen have no difficulty sailing our boats but experienced sea-sailors can find Broads sailing a bit different.

## Is there a source of power, other than the wind?

Our boats are provided with a quant (a type of punt pole) and instruction is given on its use. We have a programme to fit electric pod motors to the cabin yachts and a number have already been fitted. These motors are not designed for sustained motoring but just for use in awkward situations. Our day-boats are supplied with either oars or paddles.

## Where can I charge the boat's batteries?

The Broads Authority provides a number of charging points at their 24-hour moorings and payment cards for these are available when you collect your boat. Details of charging points are given in the boat's information pack or on the Broads Authority website ([www.broads-authority.gov.uk](http://www.broads-authority.gov.uk))

## How long will a full battery charge last?

This will depend on how it's used. The charge generally lasts 4-5 hours and provided it's used for the installed purpose, e.g., mooring, bridges, getting of a lee shore, (anywhere you'd use the quant really) it should last the duration of your break.

## Can I charge my phone/tablet?

The boats do not have a power supply so we recommend bringing a suitable power bank with you.

## Are there riverside pubs/restaurants?

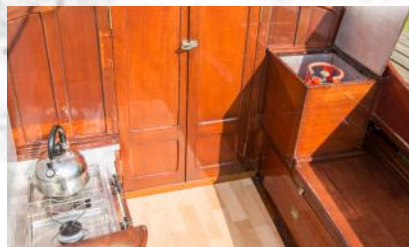
There are several and these are listed in the boat pack. Some provide free mooring for customers but these are best booked in advance.

## Are there opportunities to buy food?

There are village shops close to moorings at Ludham, Ludham Bridge, Potter Heigham, Ranworth and Horning. Supermarkets are available at Stalham and Wroxham.

## Can I charge my electric car?

Unfortunately, we do not have the facilities to charge cars at the moment.



# Frequently Asked Questions



## Are the Broads Tidal?

Yes, and currents and tidal flows do affect sailing, particularly in light winds. Tide tables are provided on the boats or on the 'Aweigh' app. The tides do affect the clearance at some bridges. The tidal range in most of the rivers and broads is normally less than 10cm.

## What storage facilities are there on the boats?

Each cabin yacht has two drawers under each bunk (capable of holding the contents of a reasonable sized suitcase) and further storage beside the bunk. Storage space for suitcases/bags is limited so it's best to unpack and leave bags in your car. There are two large drawers in the well for storing food. Bulky items can be stored in the forepeak.

## What are the cooking facilities?

Each boat in the Hustler and Wood Classes has a gas cooker with two burners and a grill. The Lullaby Class have the addition of a small oven. An adequate selection of utensils, cutlery and crockery is provided (these are listed on our website)

## Are there essentials we must bring?

Apart from your personal items, you should bring towels, washing-up liquid, tea towels, a first aid kit and cheap toilet paper. You may also find it helpful to bring a torch, power pack and sailing gloves (or good gardening gloves).

## What footwear should I bring?

Sailing/deck shoes are ideal but any flat, rubber-soled shoes are OK (Please no wellies). We would recommend walking shoes for trips ashore, e.g., for a walk to the beach.

## How can I keep food cold?

Our boats have no power supply for refrigerators. A good quality cold box will keep food cold for up to three days and we (and other boatyards) have the facility to re-freeze freezer blocks.

## What bedding is provided?

The yachts are provided with a mattress protector, sheet, duvet and pillow in cases for each bunk. If you prefer to bring your own bedding, please let us know before arrival.



## Is there a supply of hot water?

No, water must be heated in the kettle on the stove.





# Hunter's Yard

Horsefen Road

Ludham

Norfolk

NR29 5QG



## 01692 678263

[info@huntersyard.com](mailto:info@huntersyard.com)

[www.huntersyard.co.uk](http://www.huntersyard.co.uk)



### The Norfolk Heritage Fleet Trust

Charity No: 1052303

